

## FS Series - Miniature Series

MODEL : FS 4X/5/6 SCAD

Images used are for reference purpose only



### Key features

- Hermetically sealed electrical contacts • Better accuracy over the range
- Precisely adjustable flow setting • Low maintenance

### Applications

- Industrial monitoring application • Oil Monitoring in Lubrication and hydraulic systems. • Flow switching in High Pressure Systems • Flow Switching in Cooling Plants • Coolant Monitoring in Machine Tools • High Pressure Flow Rate monitoring.

### General

NXG MTD make compact type, magnetically actuated Piston type flow switches are designed for positive detection of fluid flow through your equipment. FS series models provides adjustability over wide range. These are suitable for water, kerosene, Very low viscosity lubricating oils, gas/air etc.

### FLOW SWITCH

#### Technical specifications

<b>Scale Tolerance</b>	±3% of full scale
<b>Max. System Pressure</b>	200 Kg/cm <sup>2</sup>
<b>Temperature Range</b>	8° to 100°C
<b>Sensor Specifications</b>	Hermetically sealed reed switch,
<b>Contact Rating*</b>	1A 230VAC 50 VA , SPDT 1NO+1NC
<b>Hysteresis</b>	Depending on Switch value.
<b>Available Port Sizes</b>	½", ¾", 1" BSP/NPT Female

#### MOC of wetted parts

Housing	: SS316L
Spring	: SS316L
Float	: SS316L
Fittings	: SS316L

Wetted parts are those which come directly in contact with the process fluid

### FLOW RATE INDICATOR

#### Technical specifications

<b>Metering Accuracy</b>	±3% of full scale
<b>Repeatability</b>	±1% of full scale
<b>Max. System Pressure</b>	200 Kg/cm <sup>2</sup>
<b>Max. Pressure Drop</b>	0.25Kg/cm <sup>2</sup>
<b>Temperature Range</b>	8° to 100°C
<b>Hysteresis</b>	Depending on Switch value.
<b>Available Port Sizes</b>	½", ¾", 1" BSP Female

#### MOC of wetted parts

Housing	: SS316L
Spring	: SS316L
Float	: SS316L
Fittings	: SS316L

Wetted parts are those which come directly in contact with the process fluid

*Note: Fluid should be very clean. Suspended particles may clog the flow switch which consequently affects the flow switch performance. Please take care of surge currents to avoid damage of Reed switch element. In such cases please apply R.C. (Resistor & Capacitor) network.*

## FLOW RATE INDICATOR WITH SWITCH

### Technical specifications

<b>Set point Accuracy</b>	±3% of full scale
<b>Metering Accuracy</b>	±3% of full scale
<b>Repeatability</b>	±1% of full scale
<b>Max. System Pressure</b>	200 Kg/cm <sup>2</sup>
<b>Max. Pressure Drop</b>	0.25Kg/cm <sup>2</sup>
<b>Temperature Range</b>	8° to 100°C
<b>Sensor Specifications</b>	Hermetically sealed reed switch,
<b>Contact Rating*</b>	1A 230VAC 50 VA , SPDT 1NO+1NC
<b>Hysteresis</b>	Depending on Switch value.
<b>Available Port Sizes</b>	½", 3/4", 1" BSP/NPT Female

### MOC of wetted parts

Housing	: SS316L
Spring	: SS316L
Float	: SS316L
Fittings	: SS316L

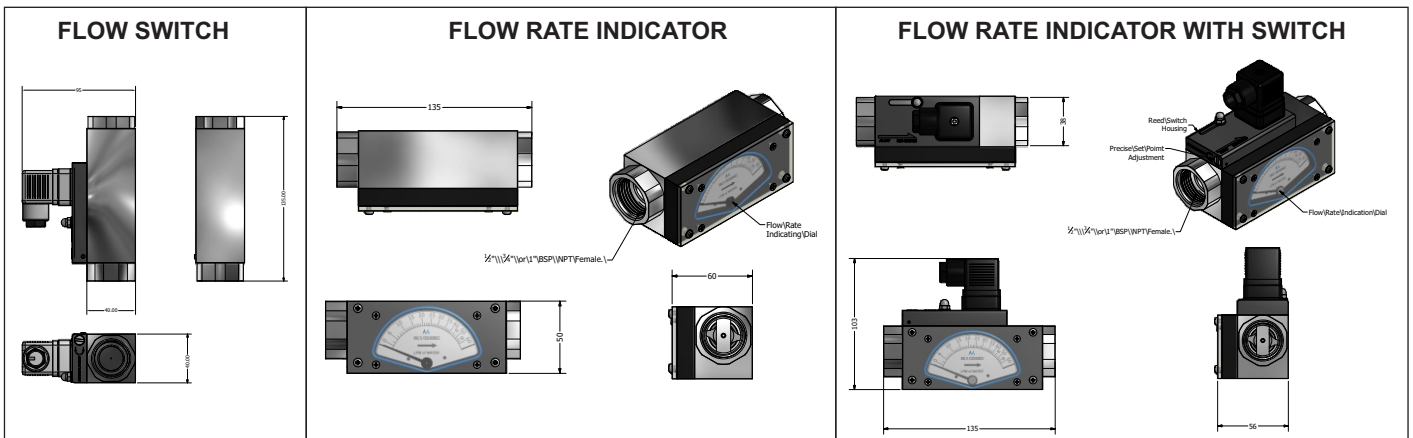
Wetted parts are those which come directly in contact with the process fluid

*Note: Fluid should be very clean. Suspended particles may clog the flow switch which consequently affects the flow switch performance. Please take care of surge currents to avoid damage of Reed switch element. In such cases please apply R.C. (Resistor & Capacitor) network.*

### Range table

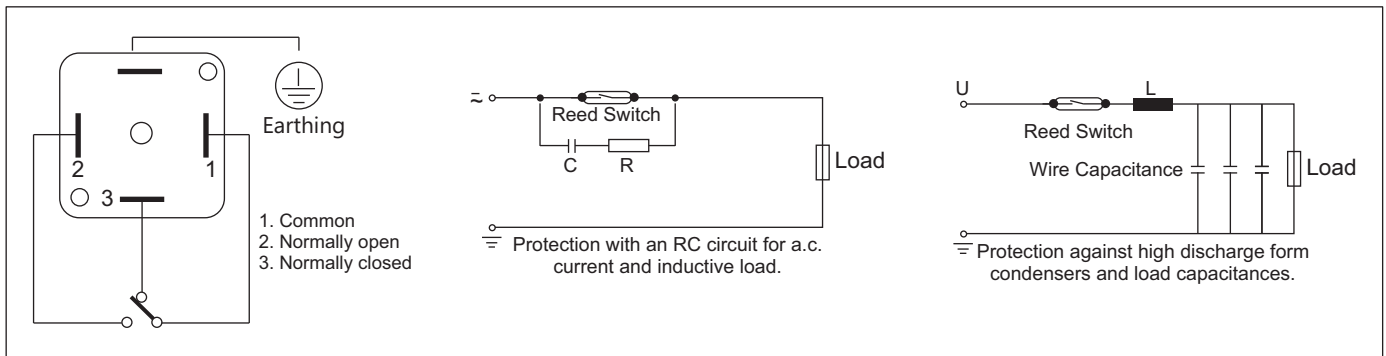
Line Size	Model No.	Recommended Max. Flow LPM of H <sub>2</sub> O	Adjustable Range LPM of H <sub>2</sub> O			W Max. mm	H Max. mm	L Max. mm	Weight Max. kg
1/2" - 12mm	FS-4XSCAD	60	3 - 30			40	96	130	1.3
3/4" - 20mm	FS-5SCAD	100	3 - 30	6 - 60		40	96	130	1.25
1" - 25mm	FS-6SCAD	150	3 - 30	6 - 60		40	96	130	1.2

### GA drawing



For # products GA drawing will be send on request

### Electrical Connection



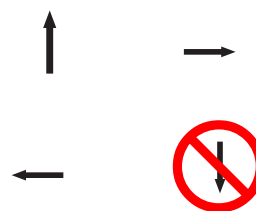
- Do not use excessive forces while fixing nozzles/ couplings. Use thread sealing for leak-tight joints. Do not hold switch in vice or wrench.
- Do not exceed electrical rating of the read switch. Use auxiliary relay or contactor for higher current rating and extra number of contacts.
- Do not exceed normal pressure rating of the switch for standard models. Consult manufacturer for higher system pressure.

## Important for your order

For placing order please fulfill following requirements.

- System Pressure
- Desired Flow Range.
- Fluid Temperature.
- Fluid Characteristics ( Physical & chemical properties)
- In case of lub-oils, viscosity must be indicated.
- Mounting position

## Mounting instructions



Note: Flow Switch value may differ according to the type of installations.  
[Please take care of surge currents to avoid damage of Reed switch element. In such cases please apply R.C. Network (Resistor & Capacitor)].  
For detailed electrical installation please refer I&M manual.

## Ordering information

### BASIC MODEL

	FS	5	S	C	A	D	ID
Flow Switch	FS						
Flow Rate Indicator	FRI						
Flow Rate Indicator With Switch	FS						

### PROCESS CONNECTION

1/2" BSPF - 15NB	4X
3/4" BSPF - 20NB	5
1" BSPF - 25NB	6
1/2" NPTF - 15NB	4XN
3/4" NPTF - 20NB	5N
1" NPTF - 25NB	6N

### MOC OF COUPLING

SS3161 S

### ELECTRICAL CONNECTOR

Micro DIN 43650 connector C  
Male M12 connector ( 24 VDC) # M

### SET POINT: ADJUSTABLE

A

### ELECTRICAL RATING

1 A 230 VAC/DC SPDT reed switch( 50 VA) D  
2 X 1 A 230 VAC/DC SPDT reed switch( 50 VA) # D2

### FLOW INDICATING DIAL

3- 30 LPM - Water	ID1
6- 60 LPM - Water	ID2
3- 30 LPM - Oil	ID3
6- 60 LPM - Oil	ID4
Custom flow rate	IDC