

Flow Switch

Model: **FS series.**

MINIATURE FLOW SWITCH

MULTI-TECH DEVICES.
CATALOGUE

General

MTD make compact type, magnetically actuated Piston type flow switches are designed for positive detection of fluid flow through your equipment. FS series models provides adjustability over wide range. These are suitable for water, kerosene, Very low viscosity lubricating oils, gas/air etc.

REED SWITCH : Hermetically sealed
CONNECTOR: DIN 43650-PG-9
PROTECTION CLASS: IP 65



FS-4BCAS

Technical Data

Scale Tolerance ±5% of full scale
Max. System Pressure 10 Kg/cm²
Temperature Range 8° to 80°C
Sensor Specifications Hermetically sealed reed switch,
Contact Rating* 500 mA*/1 A 230VAC 50 VA , 'NO' type contact
Hysteresis Depending on Switch value. minimum 0.5 l/min
Available Port Sizes 1/4", 3/8", 1/2", 3/4", 1" BSP

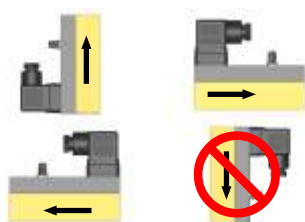
Note: Fluid should be very clean. Suspended particles may clog the flow switch which consequently affects the flow switch performance. Please take care of surge currents to avoid damage of Reed switch element. In such cases please apply R.C. (Resistor & Capacitor) network.

Line Size	Model No.	Recommended Max. Flow LPM of H ₂ O	Adjustable Range		W Max. mm	H Max. mm	L Max. mm
			LPM of H ₂ O				
1/4" - 8mm	* FS - 2BAS/2BCAS/2BCAD...	10	0.4 - 4		22	78	85
3/8" - 10mm	* FS - 3BAS/3BCAS/3BCAD...	20	0.4 - 4	1 - 10	22	78	75
1/2" - 12mm	FS - 4BAS/4BCAS/4BCAD...	40	1 - 10	2 - 20	25	81	95
3/4" - 20mm	FS - 5BAS/5BCAS/5BCAD...	60	3 - 30	4 - 40	40	96	116
1" - 25mm	FS - 6BAS/6BCAS/6BCAD...	80	4 - 40	6 - 60	40	96	116

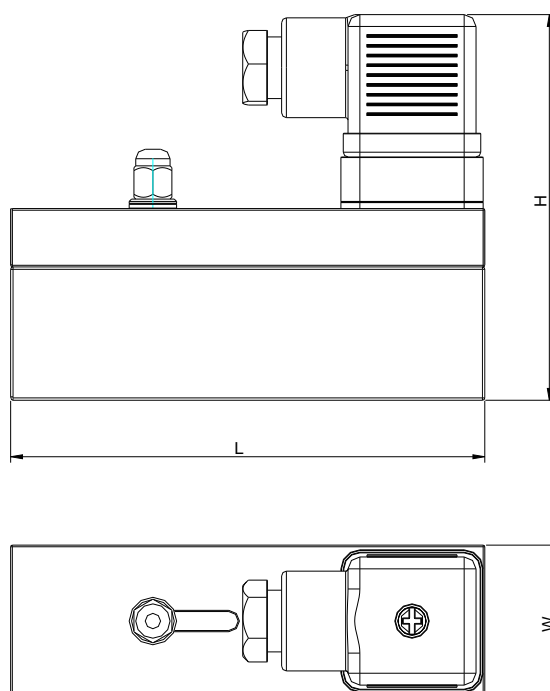
Material Composition

	Brass Version	SS Version
Housing:	Brass	304 SS
Float:	Brass	304 SS
Fittings:	Brass	304 SS

Mounting Instructions



Note: Flow Switch value may differ according to the type of installations.



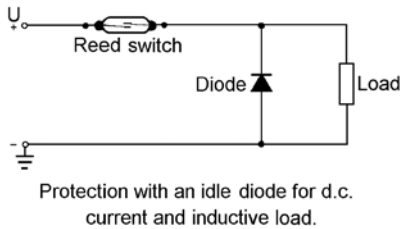
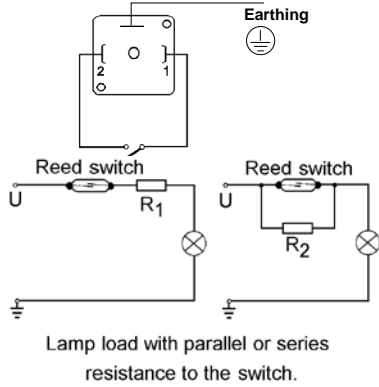
Electrical Installation

Maximum values of current and voltage must not be exceeded on the reed relay.

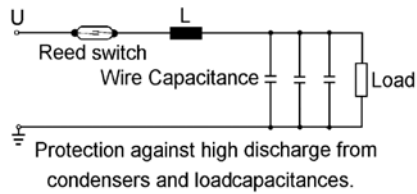
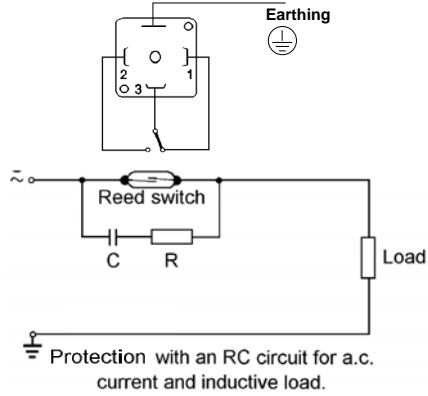
If driving inductive or capacitive loads, we recommend the use of a suitable isolation relay,

Electrical Connection

N/O Contact (SPST)



Changeover Contact (SPDT)



Important For Your Order

For placing order please fulfill following requirements.

- System Pressure
- Desired Flow Range.
- Fluid Temperature.
- Fluid Characteristics (Physical & chemical properties)
- In case of lub-oils, viscosity must be indicated.

Ordering Information

BASIC MODEL EXAMPLE : **FS - 3BCAS**

LINE SIZE		FS -	3	B	C	A	S
2	1/4" BSP						
3	3/8" BSP						
4	1/2" BSP						
5	3/4" BSP						
6	1" BSP						
M.O.C. WETTED PARTS							
S	STAINLESS STEEL						
B	BRASS						
ELECTRICAL CONNECTION TYPE							
C	DIN CONNECTOR						
Switch Setting							
A	ADJUSTABLE	-	FIXED TYPE				
REED SWITCH TYPE							
S	SPST		D	SPDT (CHANGE OVER)			